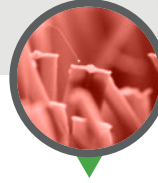




# GLOBAL SYN-TURF

GREENING PLANET EARTH

## Product Specification Sheet



### Trainers Turf-63 Terracotta

#### USES

- ▶ Pet Areas
- ▶ Sports
- ▶ Landscape
- ▶ Commercial or Residential
- ▶ Medium-Heavy Traffic

#### STEMGRASS BLADE

#### SPECIFICATIONS

Pile Height: 1-1/4"

Turf Gauge: 3/8"

Face Weight: 63 oz./yd<sup>2</sup>

Backing Weight: 26 oz./yd<sup>2</sup>

Total Weight: 89 oz./yd<sup>2</sup>

Stitch Rate: 16.5/10cm

Stitches/M<sup>2</sup>: 17325

Material/Dtex: PE12500 + PP4000

Color: Terracotta

Type Of Fiber: PE Monofilament Diamond Shaped Stemgrass and PP Curled As Thatch

Infill Amount: 1.0 lb./psf.

Primary Backing: Premium GST Backing

Tuft Bind: 9+ lb/force (ASTM D1335)

Blade Type: Stemgrass Blade

Permeability: 62.9 inches/hr. (ASTM F1551)

Melting Point: 176 °F (ASTM D2859)

Grab Tear MD: >200 lb./force (ASTM D5034)

Grab Tear CMD: >200 lb./force (ASTM D5034)

Roll Width: 15 ft

Roll Length: 100 ft

Sq. Ft. Per Roll: 1500

Total Roll Weight: 894 lbs



15 Year Manufacturer's Warranty  
8 Year Manufacturer's High Traffic Warranty



Flo-Rite Drainage Technology

